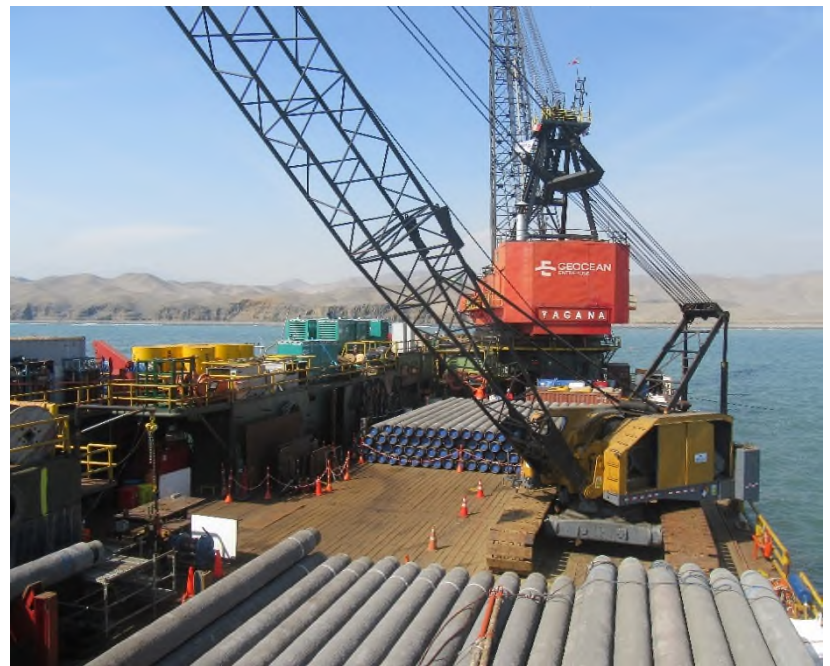




PIPE LAY & DERRICK CRANE BARGE

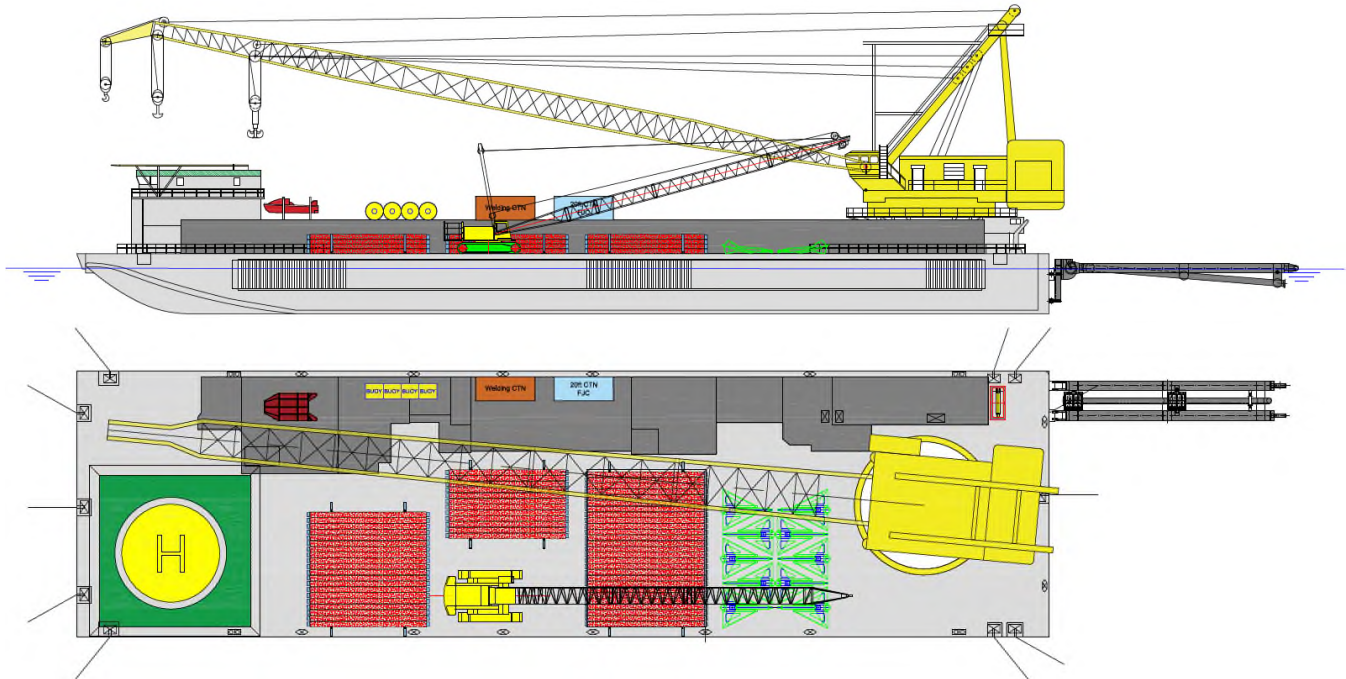
Classification: ABS A1
Flag: Panama

Dimensions:	99.1m x 27.5m
Mooring system:	10-pt mooring
Pipe lay system:	from 4" to 54"
Tensioners	2 x 18t
Deck area:	1 200 m ²
Accommodation:	125 berths
Crane	Clyde 42DE 500t



Marine
Expertise and Innovation

PRINCIPAL DIMENSIONS	
LOA	99.09m
BREADTH	27.43m
DEPTH MLD	6.71m
DRAFT MLD	3.31m
DRAFT MAX	4.66m
GROSS TONNAGE	6 089
NET TONNAGE	1 827
DISPLACEMENT MAX	10 700 t
DISPLACEMENT LIGHT	5 389 t
ANCHORS & MOORING SYSTEM	
MOORING ARRANGEMENT	10-point mooring system
MOORING WINCHES	2x triple drum hydraulic winch Clyde of 110 000 Lbs capacity 2x double drum hydraulic winch Skagit RB-90W of 92 200 Lbs capacity Integrated monitoring system (CCTV, Tension & payout meter) - Central bridge control
MOORING WIRES	10x 44mm between 600m (lateral) and 900m (bow / stern)
ANCHORS	10x 10t Flipper Delta Anchors + 2x emergency anchors
MACHINERY	
DIESEL GENERATOR SET	2x 350kW – CATERPILLAR D379 - 450V/60Hz
EMERGENCY GENERATOR SET	1x 150kW – CATERPILLAR D336 - 450V/60Hz
COMPRESSORS	3x 120lb Atlas Copco 1x 130lb Atlas Copco 2x 120lb Sulaire/Caterpillar
FUEL OIL CONSUMPTION	Berth: approx. 1.0 m ³ /day Pipelay: approx. 3.5 m ³ /day
EQUIPMENT & PUMP	
FUEL OIL PUMP	1x 7 m ³ /h
FRESH WATER PUMP	2x 7 m ³ /h
BALLAST WATER PUMP	2x 450 m ³ /h
TANK CAPACITY	
FUEL OIL	683 m ³
FRESH WATER	4 145 m ³
POTABLE WATER	589 m ³
BALLAST WATER	3 630m ³
ACCOMMODATION: 125 berths	
TWO-PERSON OFFICER BERTH	1x (2) persons
FOUR-PERSON OFFICER BERTH	4x (4) persons
FOUR-PERSON BERTH	26x (4) persons
OTHER BERTH CAPACITY	1x (6) persons
OFFICES	2x (3) persons
MEETING ROOM	2x (12) persons
SAFETY	
LIFE RAFTS	10x 25 persons
FAST RESCUE BOAT	1x 6 persons
FIRE PUMP	1x 72 m ³ /h
EMERGENCY FIRE PUMP	1x 20 m ³ /h
TELECOM	
RADIO STATION	2x VHF + 1x HF



DECK	
DECK STRENGTH	10t/m ²
DECK AREA	Approx. 1 200m ²
DECK TUGGER WINCHES	2x 5t
PIPELAY	
CAPACITY	From 4" to 54"
TENSIONER	2x 18t – RASCO T40
A/R WINCH	1x 45t – MANITOWOC 390 - 36m/min – 41mm wire
STINGER	24m floating stinger (Ballast command, depth meter, subsea camera)
WORK STATIONS	5 work stations (Typ. 3x welding, 1x NDT/repair, 1x field joint coating)
WELDING SYSTEM	Can accommodate manual, semi-automatic and fully automatic
CRANES	
MAIN CRANE	CLYDE 42 DE Capacity: 500sT at 20m – stationary over stern stationary 400sT at 24m - fully revolving Boom length: 60m Main - 70m Aux. - 75m Whip 1 x 10t tugger winch for hook control 4 x 5t tugger winches for load control
CRAWLER CRANE	Optional
NAVIGATION SYSTEM	
POSITIONING EQUIPMENT	Trimble RTK-GPS
GYRO COMPASS	1x SPERRY 37
ECHO SOUNDER	1x FURUNO FCV-S-81-L.

