

SPIECAPAG
ENTREPOSE

UTILITIES DIVISION

CONTRACTING EXPERTISE SERVICING THE WATER, WASTE WATER & SEWERAGE SECTOR



Pipelines



Mechanical Works



Ancillary Structures

Spiecapag Utilities is a division of Spiecapag and have capabilities covering the full life cycle of the Water sector including potable water, waste water treatment & sewerage upgrade projects.

FACILITATING PROJECT ACHIEVEMENT

As a subsidiary of VINCI, a world leader in concessions and construction, the Entrepose Group is an international contractor that specialises in designing, building and operating infrastructure for production, transport and storage in the oil, gas and water industries and for other infrastructure sectors.

Entrepose works globally to perform turnkey projects under EPCC contracts (engineering, procurement, construction, commissioning) or specialist works contracts. It has an outstanding reputation for its safety expertise, with a great number of successes in the management of large scale projects.

KEY FIGURES *

More than
3,000 permanent
employees

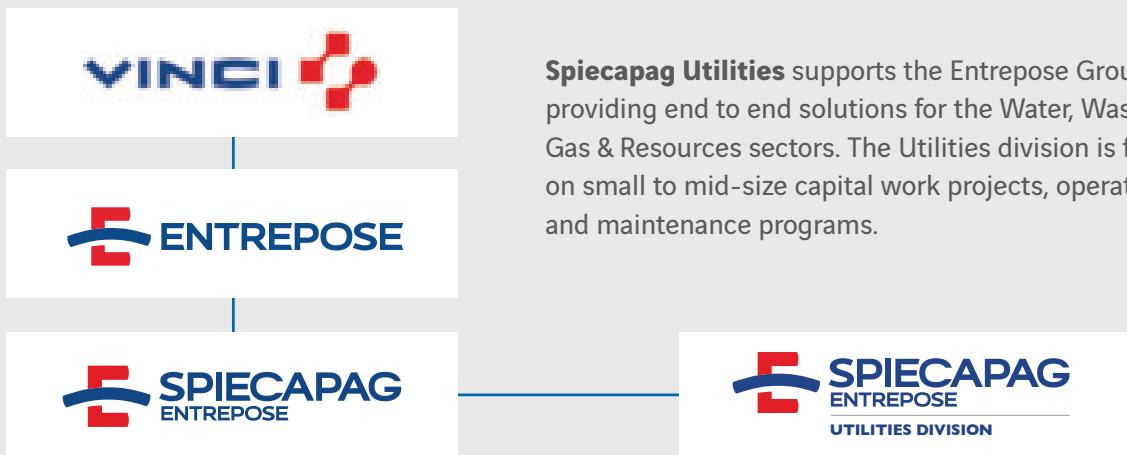
Nearly **250**
projects
completed yearly

Presence and
activity in over
30 countries

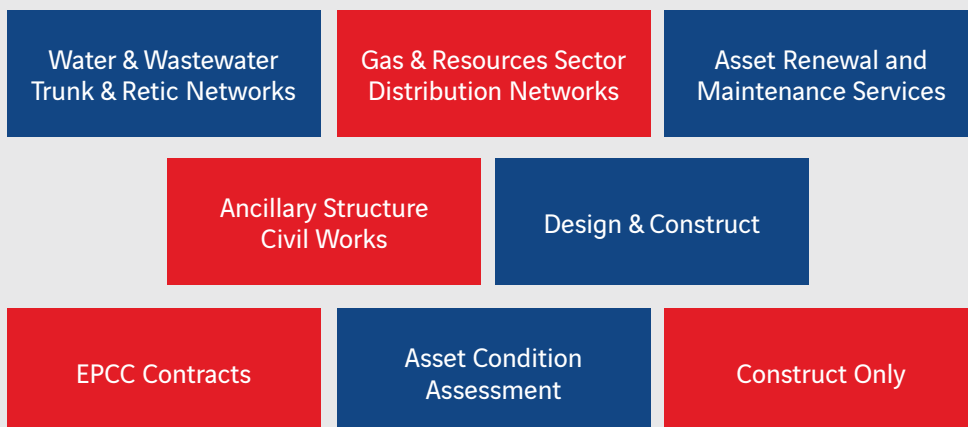
* Data as of January 1, 2016.

THE MOST EXTENSIVE EXPERTISE IN THE SECTOR

Bolstered by seven large brands, Entrepouse Group's offer is deployed in major business lines and international network of subsidiaries with multi-discipline expertise.



CAPABILITIES



UTILITY SERVICES





Fields of expertise:

- Construction of utility distribution networks for Water, Wastewater, Gas and Resource sectors including pump stations, metering stations, control and storage facilities
- Utility water and sewer – trunk and reticulated networks
- Stormwater – trunk infrastructure networks
- Civil & ancillary structures - maintenance hole chambers, emergency overflow structures, drainage structures, valves and fire hydrants
- Construction methods - conventional dig & lay, and trenchless construction methods including pipe bursting and pipe jacking
- Renewal & Maintenance Services - pipeline repairs, condition assessment services and asset management services.
- Fabrication of support infrastructure (Stainless Steel & Aluminium).

Spiecapag Utilities is a division of Spiecapag Australia. It leverages the global experience of the pipeline specialist and provides full life-cycle support and expertise to the domestic utility industry. It supports projects at all stages, from project conception and financing assistance, through engineering, procurement, construction, commissioning, operations and maintenance. This expertise covers water, sewerage, stormwater, gas and related ancillary works such as pump stations, metering stations, control and storage facilities and civil structures including maintenance chambers, emergency relief overflow structures, valves, fire hydrants and drainage structures.

Spiecapag History:

With more than 90 years of continuous experience and a fleet of equipment that it can mobilise rapidly to all points of the globe, Spiecapag has become a specialist in a wide variety of projects in the water & gas sectors. This experience is now offered in the utility sector for both small and medium diameter projects through Spiecapag Utilities, your trusted civil infrastructure partner.



SPIECAPAG UTILITIES DIVISION

Utility Infrastructure Services

Capability Profile

SPIECAPAG Utilities specialises in the construction of small to mid-size civil infrastructure projects across the water, wastewater and gas sector. We bring the knowledge, experience and support of a large pipeline construction business with the skills, capabilities and agility to deliver cost effective outcomes for utility providers and the communities they serve. This know-how in the installation of utility pipelines and infrastructure extends to associated structures: pump stations, metering stations, control and storage facilities and civil structures including maintenance chambers, emergency relief overflow structures, valves, fire hydrants and drainage structures.

SPIECAPAG Utilities is a complete utility Pipeline and Infrastructure EPC contractor. We have the expertise to participate in the research of financing, engineering the solution, procuring the materials and executing the installation of projects.



Our values:

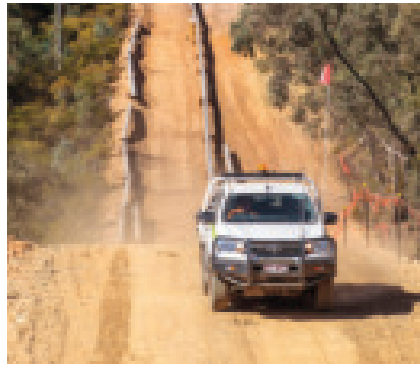
- Honest – we believe in honesty, integrity and ethics in everything we do
- Reliable – we deliver on promises for our clients and the community
- Competent – we have the capability to do the job correctly the first time
- Safe – we are safe in everything we do; safety is a priority
- Transparent – we have an open book policy with our clients
- Collaborative – we collaborate with our clients and their communities.

Services we offer:

- Management services – Engineer Procure and Construct (EPC), Design & Construct, Construct only, Testing & Commissioning
- Construction of utility distribution networks and associated infrastructure for water, sewer, stormwater, gas and resources
- Renewal services – pipe bursting & pipe jacking
- Maintenance services – pipeline repairs, condition assessment services, asset management services & renewals.

Benefits we offer through Partnerships:

- Simplified accountabilities and reduced interface management
- Early contractor involvement across multiple disciplines
- Design, Construct, Operate and Maintain services.



What our Clients Can Expect:

Our Safety Regime - Spiecapag Utilities is committed to the health and safety of all employees, having implemented a comprehensive Safety, Health and Environmental Management Plan.

Spiecapag Utilities is certified to ISO 9001 since 1995, ISO 14001, since 2001 and OHSAS 18001 since 2003. We implement an Integrated Quality, Safety and Environmental Management System that aims at the complete conformance of each project to the stated and implied requirements of our clients.

Our QHSE goals are achieved through a clear and proactive understanding between the corporate policies and its management systems and their continual improvement.



Customer-Centric Approach - We work with the local community prior to and during construction to achieve positive outcomes. This includes community engagement processes (home plans) with residents directly affected by construction works to ensure residents are informed, managed and experience great service.

Our Equipment - Spiecapag Utilities has all the specialised equipment for building water, wastewater and gas distribution mains and related utility infrastructure. We can rapidly mobilise to carry out well-managed operations all over Australia. Strengthened by our parent companies global experience, Spiecapag Utilities can develop specific equipment in collaboration with renowned equipment manufacturers to support project execution.

Efficient & Expert - The Utilities Division is overseen by experienced, in-house project managers and site supervisors, ensuring the job is completed properly the first time.

Agile & Cost-Effective Delivery - We bring the knowledge, experience and support of a large construction business with the skills, capabilities and agility to deliver cost effective outcomes for utility providers and the communities they serve.

Innovative - We bring innovative ideas to the table, be they in delivery partnerships, safety, quality, procurement and logistics, community engagement, financing or contracting.

Straight-Forward Interface Management - We have the experience to quickly integrate and work alongside other businesses, including other contractors on site, joint ventures or financiers.

Financial Stability - Part of a profitable group that has an annual turnover of \$50 billion. This group has a credit rating of A- by Standard and Poors, and A3 by Moody's, both with a stable outlook.

Genuinely global best practise - With our parent company working on projects across the globe, the Utilities Division can genuinely offer continuity to key staff. This retains expertise and builds a strong corporate memory which means we can provide our clients with tested solutions to challenges we have encountered elsewhere in Australia and around the World.

Our commitments

RESPONSIBILITY AND VALUES

No matter their area of specialisation or geographical location, Spiecapag teams are unified by the goal to set an example in all their fields of responsibility, and the common culture is built around the primary value of safety.

Safety: the goal of remaining "Injury Free on Every Site"

Facilitated by the network of HSE managers, under the authority of General Management, the sole objective of the Spiecapag Safety Policy is to ensure that its operations are carried out while remaining "Injury Free on Every Site". This policy is implemented through several unifying approaches, such as the "Safety, I Care!" plan, whose logo identifies all the Group's safety actions as well as specific initiatives to encourage coworkers to pledge their commitment to safety. On site, this policy is relayed daily with support from site supervision through a variety of actions. Examples of initiatives include "Prestart Meetings", awareness campaigns tailored to specific risks, challenge contests, all of which are promoted through tools made available to employees, such as observation cards or mobile phone applications.



WHERE WE OPERATE

The Entrepose Group builds close relationships with its customers, suppliers and the communities in which it works.



80 YEARS OF HISTORY

1935

Creation of Entrepose.

2002

Entrepose leaves SUEZ Lyonnaise des Eaux through an MBO.

2006

Acquisition of Geoclean.

2007

Purchase of Spicapag. Entrepose joins the VINCI Group.

2010

Acquisition of HDI and Entrepose Drilling.

2012

The Group takes majority interest in Geostock.

2015

Purchase of the Indonesian company IKL (oil and gas infrastructure).

2016

Integration of VINCI Environnement.

SPIECAPAG UTILITIES DIVISION

Water & Wastewater Utility Sector



Water & Sewer Main

Trunk and retic water mains for utility providers.

- Dig & Lay
- Pipe Bursting
- Pipe Jacking



Stormwater Construction

Stormwater construction (trunk)

- Councils
- Roadways
- Parks



Ancillary Utility Structures (Civil)

Ancillary utility structures

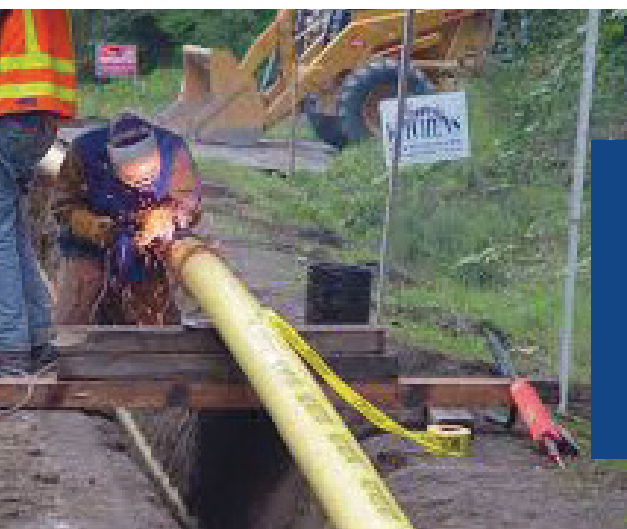
- Fire Hydrants
- Valves
- Maintenance Chambers
- Overflow Structures



Ancillary Utility Structures (mechanical)

Pump station upgrades

- Concrete plinth
- Pumps
- Variable Speed Drives
- Wet wells



Gas Distribution Networks

- Dig & Lay



SIECAPAG Australia

Level 10, 167 Eagle Street,
Brisbane, QLD 4000 - Australia

Phone: +61 7 3014 2190
australia@spiecapag.com

together @ VINCI 